

## GEOMETRY/TECHNICAL DATA SCALE

Scale remains same for MY 06 from the frame specs.

Size	Headangle	HT Length	TT Horizon	Seatangle	Top ST	CST Length	BB OS
S	70.5°	105	555	73.5°	390	420	-30
M	71°	115	580	73.5°	440	420	-30
L	71°	130	600	73°	480	420	-30
XL	71.5°	150	620	73°	530	420	-30
XXL	71.5°	160	640	73°	580	420	-30

### XXL only for alloy frame

Headset	1 1/8" semi integr. with 44.0 mm cups
Seatpost diameter carbon frame	34.9 mm
Seatpost diameter alloy frame	31.6 mm
BB housing	73 mm
Front derailleur carbon frame	E-type, top route
Front derailleur alloy frame	34.9 mm clamp, dual pull
Fork travel	80 mm
Fork length	451 mm

Scale alloy bikes will get by running change the cable fixation of the carbon frames on the downside of the top tubes.

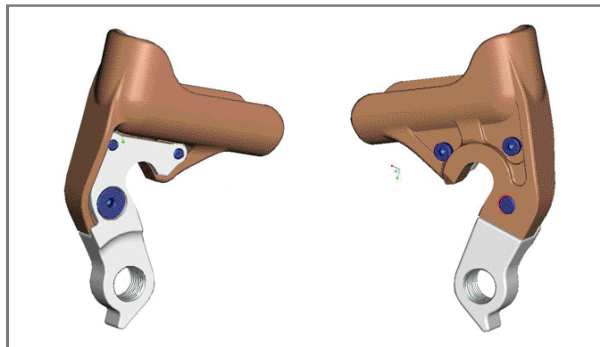
In the past months the demand of a repair set for the drop outs of Scale increased.

Therefore we will offer approx. March 06 a set that will help to cut and repair the defective drop out of the Scale frames.

To do so, we will offer also a jig that will help to cut the defective/bent part and shows the locations to drill.

Price and article number will be announced asap.

### Scale drop out



For 07 Scale will also get new drop out with a replaceable hanger. The design of this replaceable hanger will be different from the one we can offer for a repair of an already damaged frame.

